

From an observation to the digital space

How does a Citizen Science App work?

Bottom-Up!

Citizen Science relies on the participation of the public. In the age of digital tools, apps, and mobile technology, we all can be part of amazing projects to help with data, communicate and make an impact towards a better world. But what enables public participation in the background? Follow a user-made observation on the IT infrastructure from the bottom to the top - from finding a beautiful butterfly to doing Citizen Science.

Citizen Science & Citizen Action

Participating in Citizen Science Apps offers a unique perspective on our world. By providing data points and by being active in a dynamic social community, participants help science, learn and make an impact for change.

The Community

A social community is built directly into every App on the platform. With a wide range of interactive features, digital-social communities in the App support ongoing communication, motivation, and meaningful citizen action.

Push & eMails

To notify user about project and community activities, integrated services take care of sending Push Notifications and eMails.

Map & GEO Services

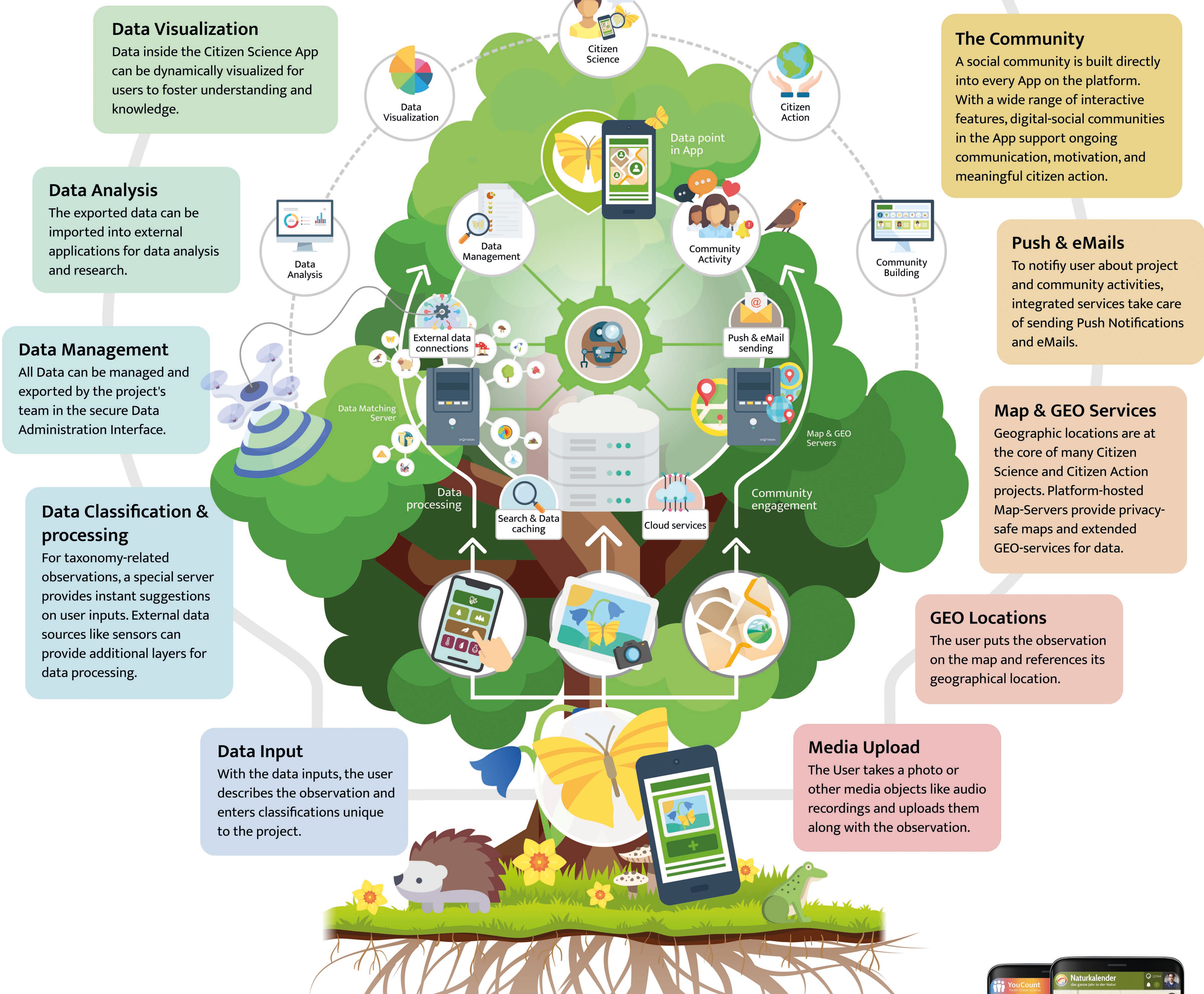
Geographic locations are at the core of many Citizen Science and Citizen Action projects. Platform-hosted Map-Servers provide privacy-safe maps and extended GEO-services for data.

GEO Locations

The user puts the observation on the map and references its geographical location.

Media Upload

The User takes a photo or other media objects like audio recordings and uploads them along with the observation.



Privacy matters!

When inviting people to participate in your project, be sure not to expose them to online surveillance or make them "the product" of some personal-data harvesting corporation. Whenever something is "free" on the internet, it is usually paid double the price with user data, constant online surveillance and behavior recording. For better data ethics and responsibility, do not use such "free" tools and services by corporations solely existing to monetize user behavior, personal backgrounds, and interests.

Platform-based Project Apps

On SPOTTERON, we develop custom Citizen Science and Citizen Engagement Apps for a wide range of projects - from biodiversity research to school courses, from social sciences to citizen action. All Apps on the platform share advanced functionalities and include tools for communication, community building, and digital innovation. Learn more about SPOTTERON at www.spotteron.net

