

# APP-MANUAL

## DOWNLOAD THE APP

Search for and find the app in the GooglePlay store or the Apple App store. Alternatively you can also enter your observations on the project's website.

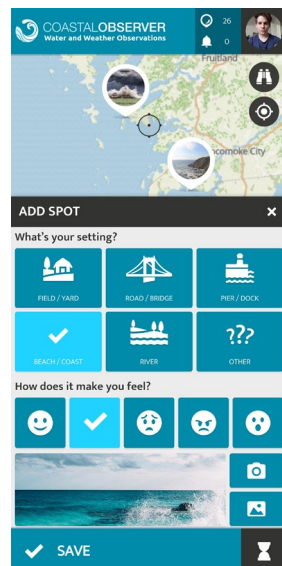
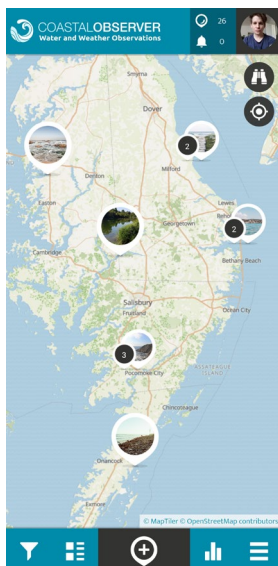


## REGISTER AN ACCOUNT + LOGIN


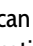
When first opening the app, register a SPOTTERON account with your eMail address, your username with  $\geq 6$  letters and a password with  $\geq 8$  letters. You can start right away and put observations on the map. If you logged out or were inactive for a long time, you can always log back in with your eMail address and the chosen password.

## OVERVIEW IN THE APP

The app starts at your location and you can see spots and stacks that were already put on the map. In the upper right corner you can see the current number of observations made, new notifications and your user profile. On the bottom you can find the filter function, the newest entries, statistics and the menu.



## ADD NEW SPOT

To add a new spot, you simply click on the icon with the plus. You can use the  symbol, to jump to your current location if your GPS is turned on. You can also use the  address search or move the map to your location manually. The positional mark shows you where on the map your spot will be placed. If the positional mark is at the right location, fill in all fields of the questionnaire from top to bottom.

### >> CHOOSE CATEGORY


The observation elements can be assigned to different categories. Choose the right category for your observation element.

### >> ADD A PICTURE TO THE OBSERVATION



Take a nice picture to make your observation visible to other users. You can also use a picture from your gallery to add to your observation.

### >> SAVE OBSERVATION

After you clicked on „Save“ the spot will be added to the map. With the  symbol on the bottom right, you can also add your observation to the waiting spots and upload it later in case you don't have an internet connection when making the observation. After the upload is completed, you will get a message saying that it was successfully added to the map and you will see all information in an overview. In case you upload from the waiting spots, it will always be added with the date you entered the observation, not the date you actually got to upload it. If necessary you can change the date later on the website.



## EDIT SPOT

If you made a mistake when first adding or updating your spot, you can edit your observation with the pen symbol later.

## DELETE SPOT

In case you want to delete an observation, click on the icon with three points above each other and choose „delete spot“. If it's a spot with updates, it will only delete the chosen entry.



## FILTER

Here you can filter the featured spots by the time frame in which they were entered and/or category. On the map, you can only see the desired spots now. Don't forget to set back the filter, to be able to see all spots again.



## NEW SPOTS

By clicking on the new spots icon, you can see the most recently added spots.



## RANKING

The ranking shows you the ten users who added the most observations.



## MENU

In the side bar menu you can find (among other things) further information on the project, the „waiting spots“ you didn't upload yet as drafts, notifications, your profile, personal settings (for example language and map background), the intro-manual, the search function to find other users and a button to log out.



## PROFILE & OTHER USERS

By clicking on your own profile in the upper right corner, you can get to your own user profile. There you will find a timeline of activities of other users you follow and an overview of the spots you added and also your own profile. You can edit your profile by clicking on the pen symbol. On the very right you can also find lists of the users you follow and who follow you.

## >> LIKING SPOTS & COMMENTS

If you really like another user's observation, you can show that by clicking on the heart to like it.

## >> COMMENTING SPOTS

You can comment on others user's spots. This way you can ask questions or for help if needed.

## >> SHARE SPOTS

By clicking on the share symbol, you can share your spots via Facebook, Twitter and Google+. If you copy the link, you can also share it via your medium of choice, for example via eMail.

## >> FOLLOW / UNFOLLOW USERS

If you don't want to miss new entries by certain users, you can follow them. All you need to do is click on one of the user's entries and „follow“. In the menu you can also search for users by name.

## FIRST AID, IF SOMETHING DOESN'T WORK!


### >> ERROR MESSAGE: NOT LOGGED IN



If an error message like „you are not logged in“ comes up while saving your spot, save your observation as draft first. You can find it again in the „waiting spots“ and load it up after you logged in again.

### >> NO DATA CONNECTION WHEN OBSERVING

You can still make an observation and save it as draft for later. You can find it in the sidebar in „waiting spots“ and load it up whenever you have an internet connection again. It is definitely good and important to collect the observation when you make it. In this case it will save the actual date you made the observation and not the date of the upload.

### >> GPS-LOCATION DOESN'T WORK

If the reticle doesn't jump to your current location, you can also use the address search  to find it or move the map to your current location manually.

If you want to be located automatically, you can turn on GPS  (if it wasn't turned on already) and open the app again, wait a few seconds and click on the  symbol (see „add new Spot spot“).

### >> ERROR MESSAGE: ALREADY A SPOT ON LOCATION

Since your new spot should be accessible, there is a distance based location lock present so that two spots can not lay over each other. If you see the message please move the crosshairs a little bit to post a new spot or use the icon to post a Spot Update.

### >> EDIT MODE: I CAN NOT CHANGE THE LOCATION / CATEGORY

If you want to change the Spot's location by dragging the map in edit mode or change the category of a spot please go first to the first entry of a observation row with spot updates and enter the edit mode there.